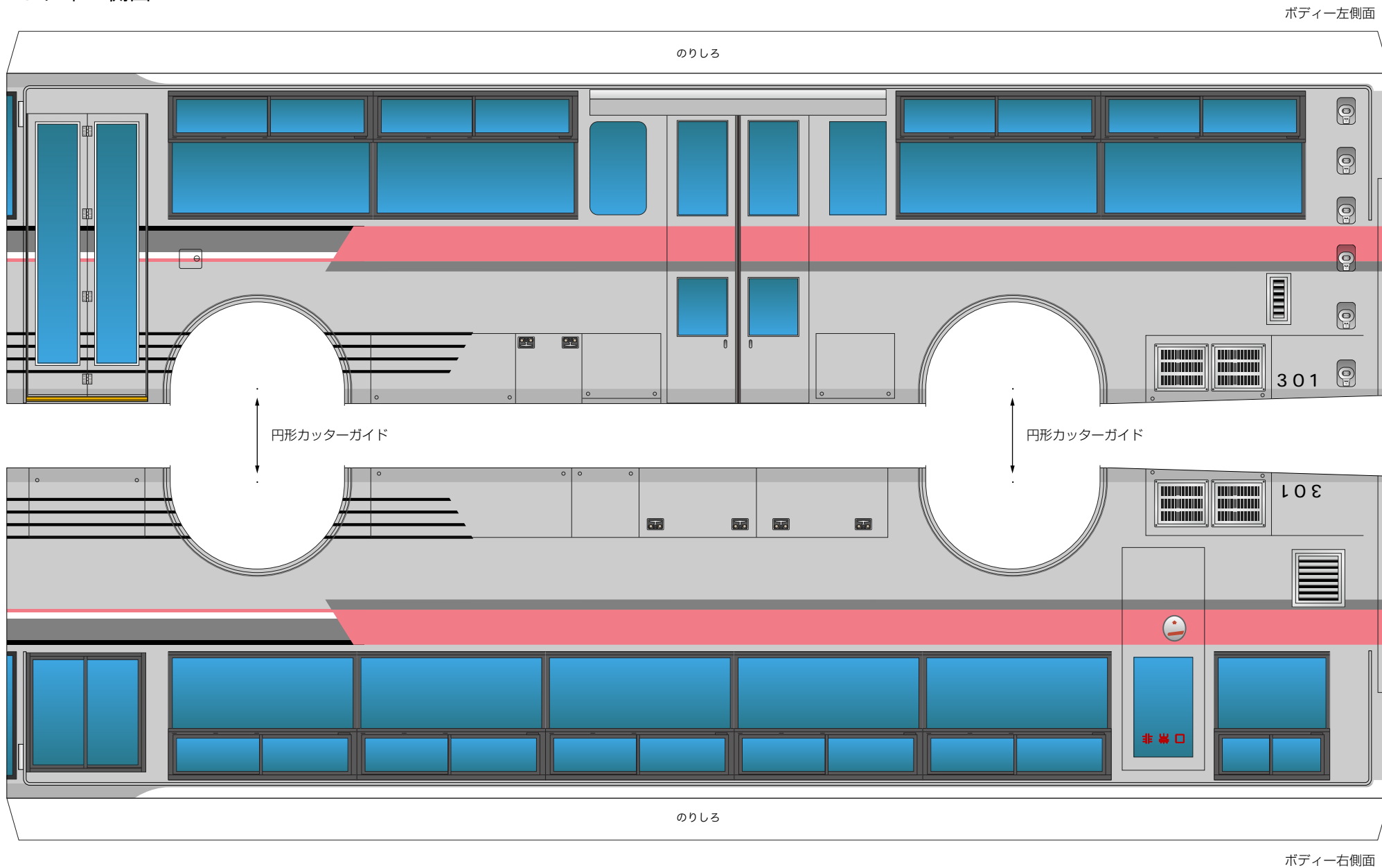
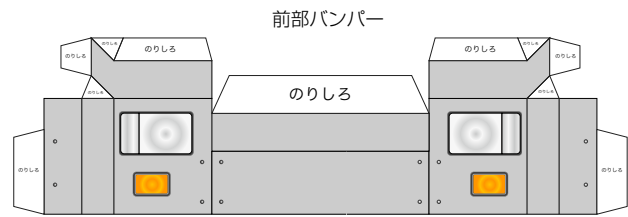
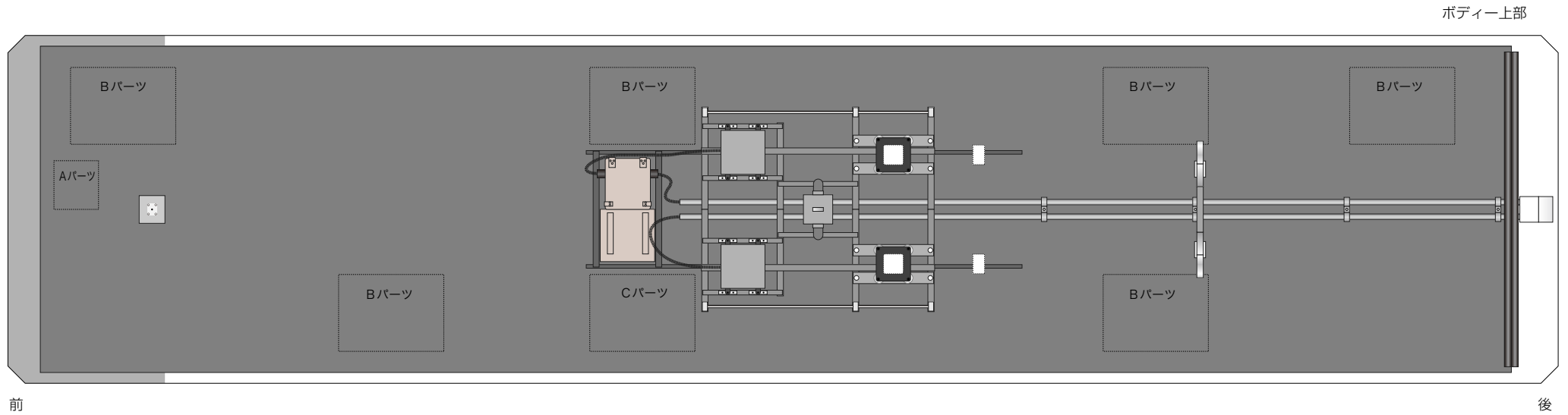


1. ボディー側面



2. ボディー上部・バンパーなど



ポール支え



集電装置 (トロリーポール)



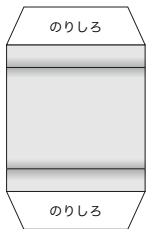
前輪接地面



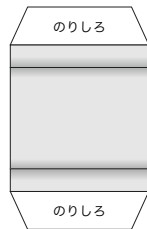
Aパーツ



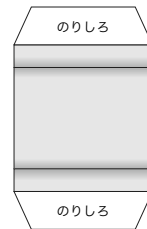
Bパーツ



のりしろ



のりしろ



のりしろ



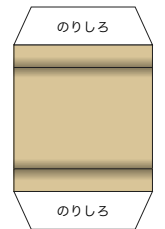
のりしろ



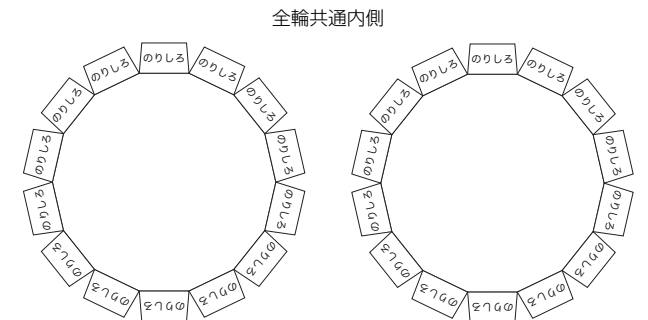
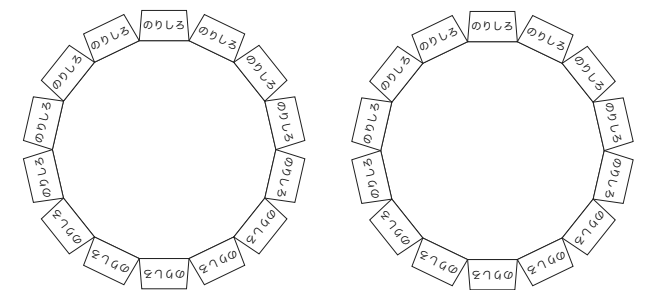
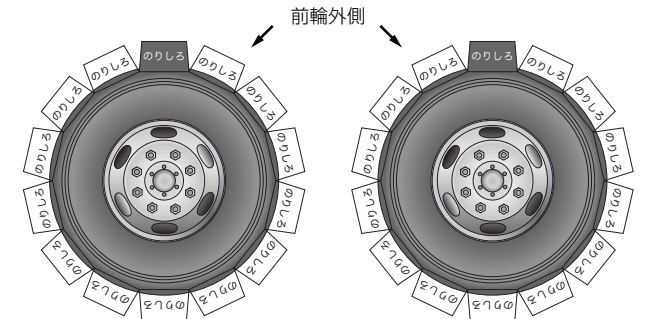
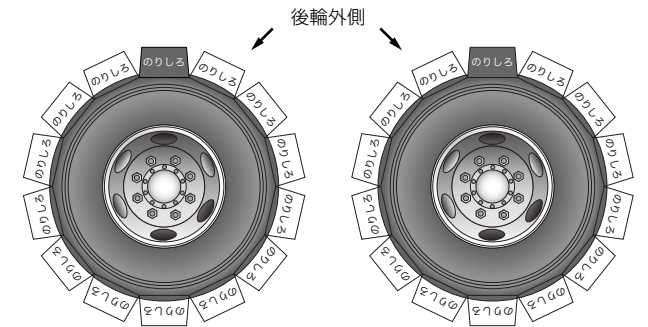
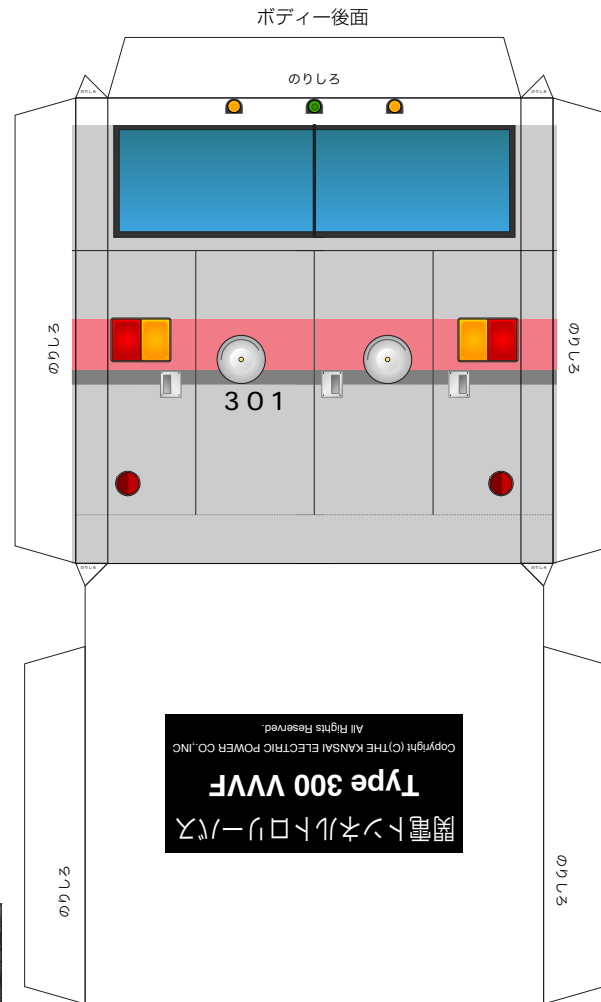
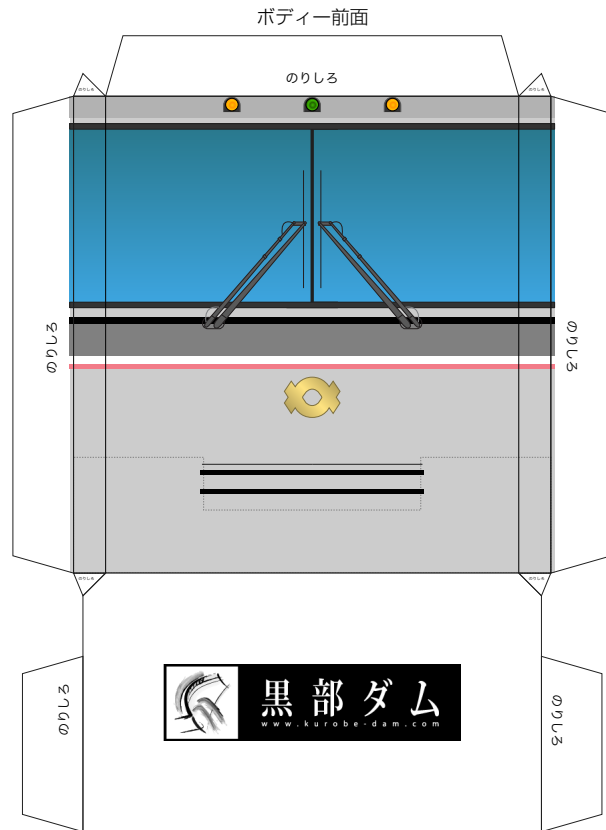
のりしろ



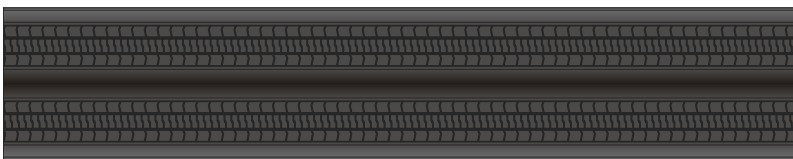
Cパーツ



3. ボディー前後・タイヤ

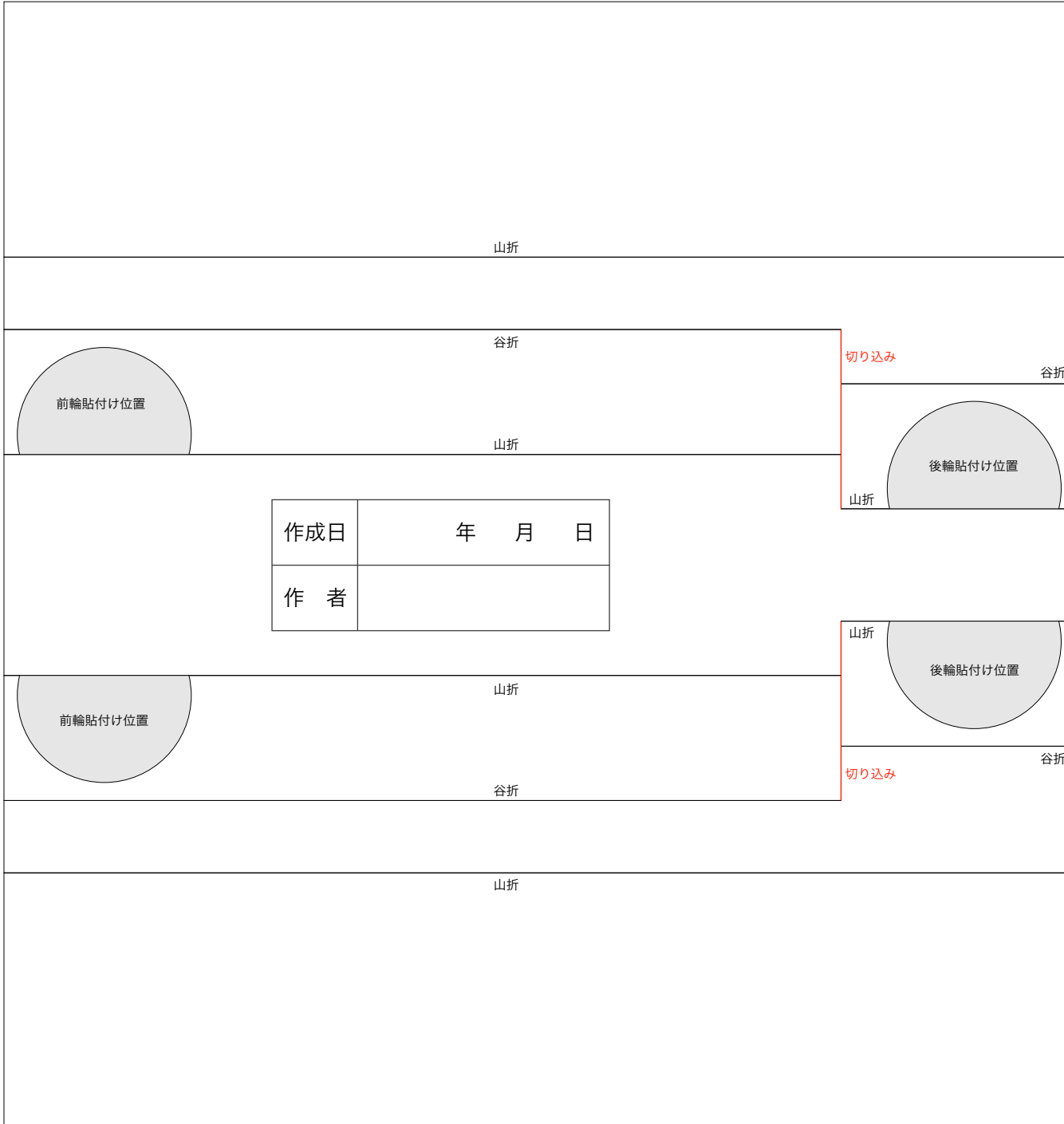


後輪接地面

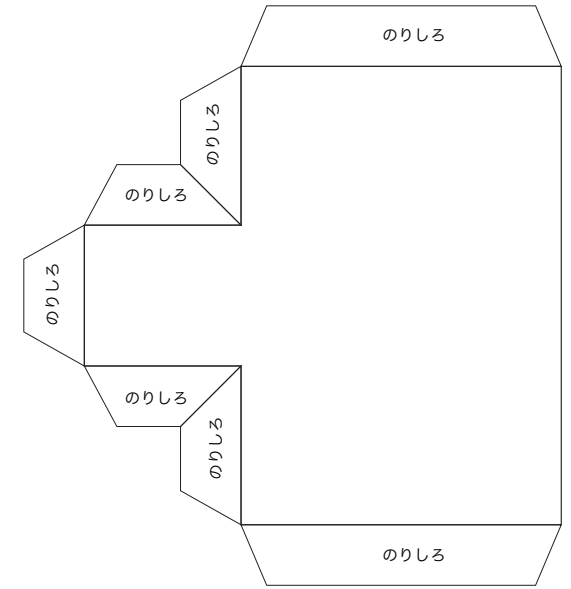


4. シャーシ部

シャーシ A



シャーシ B



シャーシ C

